



**INCREASED
CONTRAST
WITH COLOUR-
ED
TPU
INLAYS**



Stainless elements with black and white inlays. Also available with self-adhesive tape.

TACTILE GUIDANCE SYSTEM STAINLESS STEEL TPU.

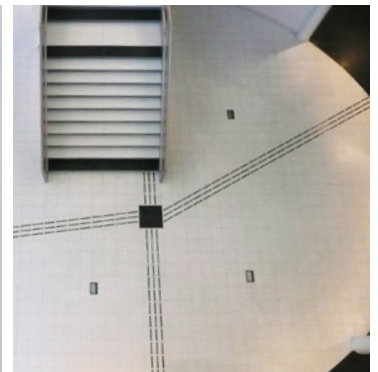
Matting tactile guidance system Stainless steel TPU is made by milling stainless steel 316. With coloured TPU inlays for additional contrast. Elements are installed with specific spacing to guide the visually impaired. Installation is performed by drilling into the substrate, three holes per element and one hole per rivet. A template is used for hole placement. Fasteners are secured using the recommended adhesive, which is applied in the drilled holes. If you do not want to drill into the substrate, elements and rivets without fasteners are also available and these can be bonded by applying tape. They are also available in a height of 3 mm. Please contact us if you would like a special version, or if you need any help with installation.

TECHNICAL SPECIFICATIONS

	Dimensions (+/- 1 mm)	NCS	Art. no
Material:	Stainless Steel 316. TPU (polyurethane) inlays.		
Element:	280 x 35 x 5 mm		
	Scraper grid, white	0,93	362341
	Scraper grid, black	0,16	362342
	White	0,93	362346
	Black	0,16	362343
	White without fastener	0,93	362347
	Black without fastener	0,16	362638
Element:	280 x 35 x 3 mm		
	Black without fastener	0,16	362636
Rivet:	Ø35 x 5 mm		
	White without fastener	0,93	362329UF
	Black	0,16	362330
	Black without fastener	0,16	362330UF



Elements with 3M tape .



High-contrast installation at CNG in Finspång.



Elements for screw fastening in scraper grids.

